



2018

HS[®] SPRENGER
DOG EQUIPMENT

A close-up, black and white photograph of a curved metal collar. The words 'HS-GERMANY' are stamped in a bold, sans-serif font along the length of the collar. The background is dark and out of focus.

MADE IN GERMANY

Quality, that performs

■ Product marking

"Made in Germany" will be defined by stamping the material with HS-GERMANY and INOX or CUROGAN on every ring of all SPRENGER collars. In addition ULTRA-plates, swivels, toggles and hooks are also stamped with the quality seals "HS" or "SPRENGER". A collar without the marking "HS-GERMANY" on the rings is without doubt not a SPRENGER made product.

■ Guaranteed breaking loads

An electronic surveillance of the welding operation and the inspection of the tensile strength are part of the operational procedure as well as permanent documentation of the results. Each material and wire gauge has individual parameters whereby strict observation ensures the required strength is achieved. Due to that operational process SPRENGER is in the position to state guaranteed breaking loads for all chains and collars.

■ „Quality, that performs“

...represents more than just a strapline for SPRENGER.

This slogan reflects the quality awareness of the SPRENGER staff in order to meet the requirements and expectations of the advanced dog owner.

The high quality products made by SPRENGER are achieved through a variety of trades in combination with a large quantity of modern and classic machinery and equipment. The final inspection and packaging of the finished product is a critical part of the normal daily function with the result that, in contrast to bulk production methods, the finished products will come in touch with the hands of a person.

The significance of SPRENGER's quality awareness is not only directed towards the products, but also for delivery and customer service at a high level to give you the confidence in having a reliable business partner in order to include you amongst our loyal customers.

Your SPRENGER Sales-Team:

Petra Oppermann

Sales Manager

Phone: +49 (0) 2371-9559-940

oppermann@sprenger.de

Mirko Ritter

Sales Export: Near-, Middle- and Far East,

North America, Canada, Turkey

Phone: +49 (0) 2371-9559-942

ritter@sprenger.de

Judith Neuhaus-Wever

Sales Germany: ZIP 0.... – 39...

Sales Export: Central- & South America,

Scandinavia, Switzerland, France, Southern

Europe, Iceland, Great Britain, Australia,

New Zealand, Africa

Phone: +49 (0) 2371-9559-943

neuhaus@sprenger.de

Margarita Kulagin

Sales Germany: ZIP 40... - 99...

Sales Export: BeNeLux, Eastern Europe,

Austria, Russia

Phone: +49 (0) 2371-9559-945

kulagin@sprenger.de

■ Herm. Sprenger Metallwarenfabrik

In 1872 Hermann Sprenger founded a factory for riding accessories. In the course of the years his successors added the manufacture of boat fittings and dog accessories. Decades of experience in manufacturing, an extensive market knowledge and the collaboration with professionals from the fields of dog training, medicine and research constitute the basis for the development of international standards.



STAINLESS STEEL MATT 6-11

STAINLESS STEEL BLACK..... 12-18

STAINLESS STEEL 20-27

CUROGAN 28-31

STEEL..... 32-44

ACCESSORIES 46-63

STAINLESS STEEL
MATT

STAINLESS STEEL
BLACK

STAINLESS STEEL

CUROGAN

STEEL

ACCESSORIES

Material- and quality codes

article-no. digit 9 + 10	desription SPRENGER qualities	article-no. digit 9 + 10	description colors
00	various materials	70	pink
01	steel nickel plated	71	black
02	steel chrome-plated	73	green
55/56	stainless steel	76	blue
57	stainless steel black	77	orange
65	stainless steel matt	00	yellow
66	stainless steel black matt		
67	Curogan		
68	Curogan matt		




How do you recognize a high-quality SPRENGER chain?

All rings and swivels are stamped with the SPRENGER seal of quality HS-GERMANY!



Measure overview



Please think of an addition to pull the chain over the dog's head.

Inch	mm
3/64	1.00
1/16	1.50
5/64	2.00
3/32	2.50
1/8	3.00
5/32	4.00
13/64	5.00
15/64	6.00
9/32	7.00
5/16	8.00
23/64	9.00
25/64	10.00
5/8	16.00

Inch	cm
3/4	2.00
1	2.54
1 1/4	3.00
1 5/8	4.00
2	5.00
4	10.00
6	15.00
8	20.00
10	25.00
12	30.00
14	35.00
16	40.00
18	45.00

Inch	cm
20	50.00
22	55.00
24	60.00
26	65.00
28	70.00
30	75.00
32	80.00
34	85.00
36	90.00
38	95.00
40	100.00

Breed	approx. weight in kg		neck size in cm		max. energy (kg x 5)	Steel	Stainless steel	Curogan
	min.	max.	from	to				
Airedale Terrier	20	30	40	55	125	✓	✓	✓
Akita Inu	34	50	50	65	210	✓	✓	✗
Alaskan Malamute	39	56	45	65	238	✓	✓	✗
Australian Shepherd	16	32	40	50	120	✓	✓	✓
Beagle	18	27	30	45	113	✓	✓	✓
Beauceron	30	45	45	60	188	✓	✓	✓
Bernese Mountain Dog	40	50	45	70	225	✓	✓	✗
Border Collie	14	22	35	45	90	✓	✓	✓
Boxer	25	35	45	55	150	✓	✓	✓
Bull Terrier	24	32	40	60	140	✓	✓	✓
Cattle Dog	20	30	45	55	125	✓	✓	✓
Caucasian Ovtscharka	55	90	60	80	363	✓	✓	✗
Cocker Spaniel	11	15	40	55	65	✓	✓	✓
Collie	18	30	45	55	120	✓	✓	✓
Dalmatian	23	25	35	50	120	✓	✓	✓
Doberman	30	40	40	55	175	✓	✓	✓
English Bulldog	20	25	50	65	113	✓	✓	✓
French Bulldog	10	15	40	50	63	✓	✓	✓
German Drahthaar	27	35	45	60	155	✓	✓	✓
German Shepherd	34	45	45	70	198	✓	✓	✓
Giant Schnauzer	35	50	50	65	213	✓	✓	✗
Golden Retriever	27	36	45	60	158	✓	✓	✓
Great Dane	45	90	60	80	338	✓	✓	✗
Great Munsterlander	25	32	40	60	143	✓	✓	✓
Groenendael	27	35	45	55	155	✓	✓	✓
Hollandse Herder	30	40	45	55	175	✓	✓	✓
Hovawart	28	40	55	70	170	✓	✓	✓
Irish Wolfshound	40	55	45	70	238	✓	✓	✗
Kangal	40	65	50	65	263	✓	✓	✗
Kuvasz	30	52	45	65	205	✓	✓	✗
Labrador Retriever	25	38	45	60	158	✓	✓	✓
Landseer	45	68	60	80	283	✓	✓	✗
Leonberger	45	75	50	75	300	✓	✓	✗
Malinois	27	35	45	55	155	✓	✓	✓
Mastiff	60	100	65	80	400	✓	✓	✗
Newfoundlander	45	70	65	80	288	✓	✓	✗
Pointer	20	30	45	60	125	✓	✓	✓
Pudel (Standard)	15	19	40	50	85	✓	✓	✓
Rhodesian Ridgeback	30	40	45	60	175	✓	✓	✓
Rottweiler	35	55	60	75	225	✓	✓	✗
Saint Bernard	75	85	65	80	400	✓	✓	✗
Small Munsterlander	14	18	35	55	80	✓	✓	✓
Staffordshire Bullterrier	11	17	40	60	70	✓	✓	✓
Tervueren	27	35	45	55	155	✓	✓	✓
Weimaraner	30	35	45	55	163	✓	✓	✓
Wolfs-Spitz	27	37	40	65	160	✓	✓	✓

✓ recommended (please pay attention to the min. wire gauge)
✗ not recommended

For each chain shown in the catalogue you will find a guideline for which weight of the dog the respective chain is suitable.



STAINLESS STEEL MATT

The modern quality stainless steel matt represents an innovation from SPRENGER. It combines all the proven advantages and positive features of a SPRENGER dog collars made of stainless steel. A special manufacturing process gives the collars and fittings the matt design.

Since it is not a coating, color changes due to natural abrasion cannot be excluded. Due to the properties of stainless steel, the material darkens evenly over time.

SPRENGER collars made of matt stainless steel have all the positive features you know and appreciate from our polished stainless steel collars.

- **quality, robustness and durability**
- **high breaking loads**
- **appealing noble optics**
- **full material**
- **stainless**
- **seawater resistant**
- **use a mild detergent or rinsing agent for cleaning**

STAINLESS STEEL
MATT



NeckTech Fun with ClicLock

stainless steel matt



Feature: 1 D-Ring

- appealing and unique appearance
- pleasant wearing comfort for all short- and long-haired breeds
- length can be varied by adding or removing individual links

Article number	Length	For dogs up to
50051 010 65	48 cm	65 kg
50051 014 65	60 cm	65 kg



Single Elements NeckTech Fun

stainless steel matt



Feature: 2 pieces on self service card

- to extend the NeckTech Fun
- extension by 3 cm per replacement link

Article number	Length
50506 000 65	3 cm



Collar

stainless steel matt



Feature: 2 rings
Chain type: round

- runs very well through the ring due to the short links
- ideal for short haired breeds

Article number	Length [cm]	Wire gauge	For dogs up to
51112 0__ 65	45 / 50 / 55 / 60 / 65	3.00 mm	55 kg



Collar

stainless steel matt



Feature: 2 rings
Chain type: round

- eminently strong
- ideal for short haired breeds

Article number	Length [cm]	Wire gauge	For dogs up to
51381 0__ 65	55 / 60 / 65 / 70 / 75 / 80	4.00 mm	90 kg

Twin Row Martingale Collar

stainless steel matt



Feature: with assembly chain and welded ring

Chain type: round

- choosing the right length: neck circumference of the dog + 5 cm
- ideal for short haired breeds
- restriction to the length of the assembly chain

Article number	Length [cm]	Wire gauge	For dogs up to
51113 0__ 65	35 / 40 / 45 / 50 / 55 / 60	3.00 mm	55 kg



STAINLESS STEEL
MATT

Collar with plate

stainless steel matt



Feature: with plate and 2 rings

Chain type: medium

- medium sized links are sliding very well through the ring
- suitable for all types of engraving
- attachment of an additional split ring for tension limitation possible

Article number	Length [cm]	Wire gauge	For dogs up to
51543 0__ 65	46 / 54 / 61 / 68	3.00 mm	50 kg



Collar

stainless steel matt



Feature: 2 rings

Chain type: medium

- medium sized links are sliding very well through the ring
- ideal for working with the dog
- attachment of an additional split ring for tension limitation possible

Article number	Length [cm]	Wire gauge	For dogs up to
51541 0__ 65	39 / 44 / 50 / 55 / 61 / 67	3.00 mm	50 kg



Collar, extra strong

stainless steel matt



Feature: 2 rings

Chain type: medium

- fur saving
- eminently strong
- especially suitable for Molosser breeds
- attachment of an additional split ring for tension limitation possible

Article number	Length [cm]	Wire gauge	For dogs up to
51641 0__ 65	51 / 54 / 59 / 64 / 69 / 74	4.00 mm	110 kg



STAINLESS STEEL
MATT



Collar

stainless steel matt

Feature: 2 rings
Chain type: long links



- comfortable for long and fine fur due to link size and shape
- attachment of an additional split ring for tension limitation possible

Article number	Length [cm]	Wire gauge	For dogs up to
51506 0__ 65	50 / 54 / 58 / 62 / 66 / 72	3.00 mm	50 kg



Collar

stainless steel matt

Feature: 2 rings
Chain type: long links



- extra wide chain links
- comfortable for long and fine fur due to link size and shape
- attachment of an additional split ring for tension limitation possible

Article number	Length [cm]	Wire gauge	For dogs up to
51604 0__ 65	54 / 59 / 63 / 67 / 72 / 76	4.00 mm	85 kg



GOOD REASONS TO CHOOSE A SPRENGER CHAIN

- Continued production at the location in Iserlohn, Germany in the 5th generation
- Regional supplier in compliance with EU environmental regulations
- Specialized- and needs orientated training company
- Promise of quality for premium, reliable, long lasting and safe products
- Branded products – “HS GERMANY” on all rings and swivels

Collar, adjustable

stainless steel matt



Feature: with ClicLock fastener (stainless steel) and colored strap

Color: blue

Chain type: medium

- medium-sized links equally suitable for small and large breeds
- stainless steel chain combined with trendy, reflective and hard-wearing strap
- an eye-catcher for every breed

Article number	Length	Wire gauge	For dogs up to
51549 001 C5	45 - 50 cm	3.00 mm	50 kg
51549 002 C5	50 - 55 cm	3.00 mm	50 kg
51549 003 C5	55 - 60 cm	3.00 mm	50 kg
51549 004 C5	60 - 65 cm	3.00 mm	50 kg



**STAINLESS STEEL
MATT**

Collar, adjustable

stainless steel matt



Feature: with ClicLock fastener (stainless steel) and colored strap

Color: green

Chain type: medium

- medium-sized links equally suitable for small and large breeds
- stainless steel chain combined with trendy, reflective and hard-wearing strap
- an eye-catcher for every breed

Article number	Length	Wire gauge	For dogs up to
51549 001 L5	45 - 50 cm	3.00 mm	50 kg
51549 002 L5	50 - 55 cm	3.00 mm	50 kg
51549 003 L5	55 - 60 cm	3.00 mm	50 kg
51549 004 L5	60 - 65 cm	3.00 mm	50 kg



Collar, adjustable

stainless steel matt



Feature: with ClicLock fastener (stainless steel) and colored strap

Color: pink

Chain type: medium

- medium-sized links equally suitable for small and large breeds
- stainless steel chain combined with trendy, reflective and hard-wearing strap
- an eye-catcher for every breed

Article number	Length	Wire gauge	For dogs up to
51549 001 P5	45 - 50 cm	3.00 mm	50 kg
51549 002 P5	50 - 55 cm	3.00 mm	50 kg
51549 003 P5	55 - 60 cm	3.00 mm	50 kg
51549 004 P5	60 - 65 cm	3.00 mm	50 kg



Collar, adjustable

stainless steel matt



Feature: with ClicLock fastener (stainless steel) and colored strap

Color: black

Chain type: medium

- medium-sized links equally suitable for small and large breeds
- stainless steel chain combined with trendy, reflective and hard-wearing strap
- an eye-catcher for every breed

Article number	Length	Wire gauge	For dogs up to
51549 001 S5	45 - 50 mm	3.00 mm	50 kg
51549 002 S5	50 - 55 mm	3.00 mm	50 kg
51549 003 S5	55 - 60 mm	3.00 mm	50 kg
51549 004 S5	60 - 65 mm	3.00 mm	50 kg





STAINLESS STEEL BLACK

TRADITION MEETS MODERN LOOK

High-quality dog collars made of blackened stainless steel

All collars in the standard range made of stainless steel form the basis for this quality. During a galvanic process, the surface is blackened and finally polished.

Since it is not a hard coating, the permanent friction of the fur on the metal can create an attractive antique look. We recommend our standard range of stainless steel with polished surface or CUROGAN for dogs with a tendency to discolour fur.

Look out for our metal tag with the red dot and the HS-GERMANY INOX stamp on all rings and swivels when buying a black stainless steel product.

- solid material - surface blackened & polished
- absolutely stainless
- seawater resistant
- high strengths
- use a mild detergent or dish soap for cleaning



NeckTech Fun with ClicLock

stainless steel black matt

Feature: 1 D-Ring

- appealing and unique appearance
- pleasant wearing comfort for all short- and long-haired breeds
- length can be varied by adding or removing individual links

Article number	Length	For dogs up to
50051 010 66	48 cm	65 kg
50051 014 66	60 cm	65 kg



Single Elements NeckTech Fun

stainless steel black matt

Feature: 2 pieces on self service card

- to extend the NeckTech Fun
- extension by 3 cm per replacement link

Article number	Length
50506 000 66	3 cm



Collar

stainless steel black

Feature: 2 rings
Chain type: round

- runs very well through the ring due to the short links
- ideal for short haired breeds

Article number	Length [cm]	Wire gauge	For dogs up to
50803 0__ 57	30 / 35 / 40 / 45 / 50 / 55 / 60 / 65	2.00 mm	25 kg



Collar

stainless steel black

Feature: 2 rings
Chain type: round

- runs very well through the ring due to the short links
- ideal for short haired breeds

Article number	Length [cm]	Wire gauge	For dogs up to
50903 0__ 57	45 / 50 / 55 / 60	2.50 mm	40 kg



Collar

stainless steel black



Feature: 2 rings

Chain type: round

- runs very well through the ring due to the short links
- ideal for short haired breeds

Article number	Length [cm]	Wire gauge	For dogs up to
51112 0__ 57	50 / 55 / 60 / 65	3.00 mm	55 kg



**STAINLESS STEEL
BLACK**

Collar

stainless steel black



Feature: 2 rings

Chain type: round

- runs very well through the ring due to the short links
- ideal for short haired breeds

Article number	Length [cm]	Wire gauge	For dogs up to
51381 0__ 57	55 / 60 / 65 / 70 / 75 / 80	4.00 mm	90 kg



Twin Row Martingale Collar

stainless steel black



Feature: with assembly chain and welded ring

Chain type: flat polished

- choosing the right length: neck circumference of the dog + 5 cm
- ideal for short haired breeds
- restriction to the length of the assembly chain

Article number	Length [cm]	Wire gauge	For dogs up to
50881 0__ 57	35 / 40 / 45 / 50 / 55 / 60	2.00 mm	40 kg



Collar

stainless steel black



Feature: with assembly chain and welded ring

Chain type: medium

- fur saving
- choosing the right length: neck circumference of the dog + 5 cm
- restriction to the length of the assembly chain

Article number	Length [cm]	Wire gauge	For dogs up to
51545 0__ 57	45 / 50 / 55 / 60	3.00 mm	50 kg





Collar

stainless steel black

Feature: 2 rings
Chain type: medium

- medium sized links are sliding very well through the ring
- ideal for working with the dog
- attachment of an additional split ring for tension limitation possible



Article number	Length [cm]	Wire gauge	For dogs up to
51541 0__ 57	39 / 44 / 50 / 55 / 61 / 67 / 72	3.00 mm	50 kg



Collar, extra strong

stainless steel black

Feature: 2 rings
Chain type: medium

- fur saving
- eminently strong
- especially suitable for Molosser breeds
- attachment of an additional split ring for tension limitation possible



Article number	Length [cm]	Wire gauge	For dogs up to
51641 0__ 57	51 / 54 / 59 / 64 / 69 / 74 / 80 / 85	4.00 mm	110 kg



Collar

stainless steel black

Feature: 2 rings
Chain type: long links

- comfortable for long and fine fur due to link size and shape
- attachment of an additional split ring for tension limitation possible



Article number	Length [cm]	Wire gauge	For dogs up to
51506 0__ 57	50 / 54 / 58 / 62 / 66 / 72	3.00 mm	50 kg



Collar

stainless steel black

Feature: 2 rings
Chain type: long links

- comfortable for long and fine fur due to link size and shape
- attachment of an additional split ring for tension limitation possible



Article number	Length [cm]	Wire gauge	For dogs up to
51663 0__ 57	51 / 55 / 58 / 61 / 65	4.00 mm	85 kg

Collar

stainless steel black



Feature: 2 rings

Chain type: long links

- extra wide chain links
- comfortable for long and fine fur due to link size and shape
- attachment of an additional split ring for tension limitation possible

Article number	Length [cm]	Wire gauge	For dogs up to
51604 0__ 57	54 / 59 / 63 / 67 / 72 / 76	4.00 mm	85 kg



**STAINLESS STEEL
BLACK**



SPRENGER DOG EQUIPMENT TRAINING

If you have experience in dog sports or are a professional trainer, please request the current training brochure from your responsible contact. You can also look forward to trendy new products in the training brochure!

If you have any questions, please do not hesitate to contact us!





Collar, adjustable

stainless steel black



Feature: with ClicLock fastening (stainless steel black) and colored strap, adjustable
Color: blue
Chain type: medium

- medium-sized links equally suitable for small and large breeds
- stainless steel chain combined with trendy, reflective and hard-wearing strap
- an eye-catcher for every breed

Article number	Length	Wire gauge	For dogs up to
51549 001 C7	45 - 50 cm	3.00 mm	50 kg
51549 002 C7	50 - 55 cm	3.00 mm	50 kg
51549 003 C7	55 - 60 cm	3.00 mm	50 kg
51549 004 C7	60 - 65 cm	3.00 mm	50 kg



Collar, adjustable

stainless steel black



Feature: with ClicLock fastening (stainless steel black) and colored strap, adjustable
Color: green
Chain type: medium

- medium-sized links equally suitable for small and large breeds
- stainless steel chain combined with trendy, reflective and hard-wearing strap
- an eye-catcher for every breed

Article number	Length	Wire gauge	For dogs up to
51549 001 L7	45 - 50 cm	3.00 mm	50 kg
51549 002 L7	50 - 55 cm	3.00 mm	50 kg
51549 003 L7	55 - 60 cm	3.00 mm	50 kg
51549 004 L7	60 - 65 cm	3.00 mm	50 kg



Collar, adjustable

stainless steel black



Feature: with ClicLock fastening (stainless steel black) and colored strap, adjustable
Color: pink
Chain type: medium

- medium-sized links equally suitable for small and large breeds
- stainless steel chain combined with trendy, reflective and hard-wearing strap
- an eye-catcher for every breed

Article number	Length	Wire gauge	For dogs up to
51549 001 P7	45 - 50 cm	3.00 mm	50 kg
51549 002 P7	50 - 55 cm	3.00 mm	50 kg
51549 003 P7	55 - 60 cm	3.00 mm	50 kg
51549 004 P7	60 - 65 cm	3.00 mm	50 kg



Collar, adjustable

stainless steel black



Feature: with ClicLock fastening (stainless steel black) and colored strap, adjustable
Color: black
Chain type: medium

- medium-sized links equally suitable for small and large breeds
- stainless steel chain combined with trendy, reflective and hard-wearing strap
- an eye-catcher for every breed

Article number	Length	Wire gauge	For dogs up to
51549 001 S7	45 - 50 mm	3.00 mm	50 kg
51549 002 S7	50 - 55 mm	3.00 mm	50 kg
51549 003 S7	55 - 60 mm	3.00 mm	50 kg
51549 004 S7	60 - 65 mm	3.00 mm	50 kg



NeckTech

The patented **NeckTech Fun** convinces with its high strength and durability, which is achieved by stamping the individual elements out of strip material.

All components, whether individual links or the **ClicLock**, are guaranteed stainless. With its unique and appealing appearance, it impresses on both small and larger breeds at the same time.

Convince yourself of the **quality** of our NeckTech Fun!

Make your
collar **unique!**

Combine NeckTech STAINLESS STEEL, STAINLESS STEEL MATT, STAINLESS STEEL BLACK MATT and CUROGAN MATT and create a NeckTech Fun, entirely according to your ideas and personal taste.





STAINLESS STEEL

QUALITY WITH TRADITION

High quality dog collars made of stainless steel

The numerous advantages of this quality are the reason why especially dog sportsmen and professional trainers use stainless steel collars.

Special processing steps in production and the selection of materials create properties such as seawater resistance, robustness and safety.

When buying a stainless steel product, pay attention to our metal tag with the red dot and to the HS-GERMANY INOX stamp on all rings and swivels, which guarantees you the described premium SPRENGER-quality.

- solid material - polished
- absolutely stainless
- seawater resistant
- care with our Diamond Paste (metal polish)



NeckTech Fun with ClickLock

stainless steel



Feature: 1 D-Ring

- appealing and unique appearance
- pleasant wearing comfort for all short- and long-haired breeds
- length can be varied by adding or removing individual links

Article number	Length	For dogs up to
50051 010 55	48 cm	65 kg
50051 014 55	60 cm	65 kg



NeckTech Fun with Assembly Chain

stainless steel



Feature: swivel and snap hook

- appealing and unique appearance
- snap hook with screw connection to prevent unintentional opening
- pleasant wearing comfort for all short- and long-haired breeds
- length can be varied by adding or removing individual links

Article number	Length	For dogs up to
50156 010 55	48 cm	65 kg
50156 014 55	60 cm	65 kg



Single Elements NeckTech Fun

stainless steel



Feature: 2 pieces on self service card

- to extend the NeckTech Fun
- extension by 3 cm per replacement link

Article number	Length
50506 000 55	3 cm



Twin Row Martingale Collar

stainless steel



Feature: with assembly chain and welded ring

Chain type: flat polished

- choosing the right length: neck circumference of the dog + 5 cm
- ideal for short haired breeds

Article number	Length [cm]	Wire gauge	For dogs up to
50881 0__ 55	30 / 35 / 40 / 45 / 50 / 55 / 60	2.00 mm	40 kg

Collar

stainless steel



Feature: 2 rings

Chain type: round

- runs very well through the ring due to the short links
- ideal for short haired breeds

Article number	Length [cm]	Wire gauge	For dogs up to
50803 0__ 55	30 / 35 / 40 / 45 / 50 / 55 / 60 / 65	2.00 mm	25 kg



Collar

stainless steel



Feature: 2 rings

Chain type: round

- runs very well through the ring due to the short links
- ideal for short haired breeds

Article number	Length [cm]	Wire gauge	For dogs up to
50903 0__ 55	30 / 35 / 40 / 45 / 50 / 55 / 60 / 65	2.50 mm	40 kg



STAINLESS STEEL

Collar

stainless steel



Feature: 2 rings

Chain type: round

- runs very well through the ring due to the short links
- ideal for short haired breeds

Article number	Length [cm]	Wire gauge	For dogs up to
51112 0__ 55	40 / 45 / 50 / 55 / 60 / 65 / 70	3.00 mm	55 kg



Collar

stainless steel



Feature: 2 rings

Chain type: round

- runs very well through the ring due to the short links
- ideal for short haired breeds

Article number	Length [cm]	Wire gauge	For dogs up to
51381 0__ 55	55 / 60 / 65 / 70 / 75 / 80	4.00 mm	90 kg





Collar with ULTRA-Plate

stainless steel



Feature: limited traction
Chain type: round

- infinitely adjustable by moving the ULTRA-plate
- ideal for short haired breeds

Article number	Length [cm]	Wire gauge	For dogs up to
50906 0__ 55	40 / 45 / 50 / 55 / 60 / 65 / 70	2.50 mm	40 kg



Collar with ClicLock

stainless steel



Feature: 3 rings and ClicLock fastener
Chain type: medium

- easy tightening because of the ClicLock-fastener
- closed collar that can be used under tension
- attachment of an additional split ring for tension limitation possible

Article number	Length [cm]	Wire gauge	For dogs up to
51544 0__ 55	42 / 46 / 50 / 54 / 58 / 62	3.00 mm	50 kg



Collar, adjustable

stainless steel



Feature: 1 ring and SPRENGER hook 60250
Chain type: medium

- new position of the ring for an optimized wearing comfort
- fur saving

Article number	Length [cm]	Wire gauge	For dogs up to
51547 0__ 55	45 / 50 / 55 / 60 / 65 / 75	3.00 mm	50 kg



Retrieving collar, training aid according to Knut Fuchs

stainless steel



Feature: 2 rings and SPRENGER hook 60250
Chain type: medium

- new position of the hook for an optimized wearing comfort
- fur saving
- also ideal to handle taller dogs
- adjustable

Article number	Length [cm]	Wire gauge	For dogs up to
51548 0__ 55	45 / 50 / 55 / 60 / 65	3.00 mm	50 kg

Collar

stainless steel



Feature: 2 rings

Chain type: medium

- medium sized links are sliding very well through the ring
- ideal for working with the dog
- recommended for small and large breeds due to the outstanding tensile strength
- attachment of an additional split ring for tension limitation possible

Article number	Length [cm]	Wire gauge	For dogs up to
51541 0__ 55	39 / 44 / 50 / 55 / 61 / 67 / 72	3.00 mm	50 kg



Collar, extra strong

stainless steel



Feature: 2 rings

Chain type: medium

- fur saving
- eminently strong
- especially suitable for Molosser breeds
- attachment of an additional split ring for tension limitation possible

Article number	Length [cm]	Wire gauge	For dogs up to
51641 0__ 55	51 / 54 / 59 / 64 / 69 / 74 / 80 / 85	4.00 mm	110 kg



STAINLESS STEEL

Collar, "Lightweight"

stainless steel



Feature: 2 rings

Chain type: long links

- only 0,08 - 0,110 kg per chain
- chain hardly noticeable for the dog due to the low weight
- work with surprise effect possible
- popular chain to work with the dog
- attachment of an additional split ring for tension limitation possible

Article number	Length [cm]	Wire gauge	For dogs up to
51553 0__ 55	40 / 44 / 47 / 51 / 54 / 58 / 61 / 64 / 68	3.00 mm	50 kg



Collar, long links

stainless steel



Feature: 2 rings

Chain type: long links

- comfortable for long and fine fur due to link size and shape
- attachment of an additional split ring for tension limitation possible

Article number	Length [cm]	Wire gauge	For dogs up to
51506 0__ 55	46 / 50 / 54 / 58 / 62 / 66 / 72	3.00 mm	50 kg





Collar

stainless steel

Feature: 2 rings
Chain type: long links

- comfortable for long and fine fur due to link size and shape
- attachment of an additional split ring for tension limitation possible



Article number	Length [cm]	Wire gauge	For dogs up to
51663 0__ 55	51 / 55 / 58 / 61 / 65 / 68 / 71 / 74	4.00 mm	85 kg



Collar

stainless steel

Feature: 2 rings
Chain type: long links

- extra wide chain links
- comfortable for long and fine fur due to link size and shape
- attachment of an additional split ring for tension limitation possible



Article number	Length [cm]	Wire gauge	For dogs up to
51604 0__ 55	54 / 59 / 63 / 67 / 72 / 76 / 80	4.00 mm	85 kg

STAINLESS STEEL



Collar, adjustable

stainless steel

Feature: infinitely adjustable restriction and SPRENGER hook 60250
Chain type: medium

- fur saving
- in accordance with the latest animal welfare requirements



Article number	Length [cm]	Wire gauge	For dogs up to
52540 0__ 55	36 / 40 / 44 / 48 / 54 / 60	3.00 mm	50 kg



Collar, adjustable

stainless steel

Feature: infinitely adjustable restriction and SPRENGER hook 60250
Chain type: long links

- fur saving
- in accordance with the latest animal welfare requirements



Article number	Length [cm]	Wire gauge	For dogs up to
51516 0__ 55	50 / 54 / 58 / 62 / 66 / 70	3.00 mm	50 kg

Collar, adjustable

stainless steel



- Feature:** infinitely adjustable restriction and SPRENGER hook 60250
- Chain type:** long links
- extra long chain links
 - fur saving
 - in accordance with the latest animal welfare requirements

Article number	Length [cm]	Wire gauge	For dogs up to
51616 0__ 55	65 / 70 / 75 / 80 / 85 / 90	4.00 mm	80 kg



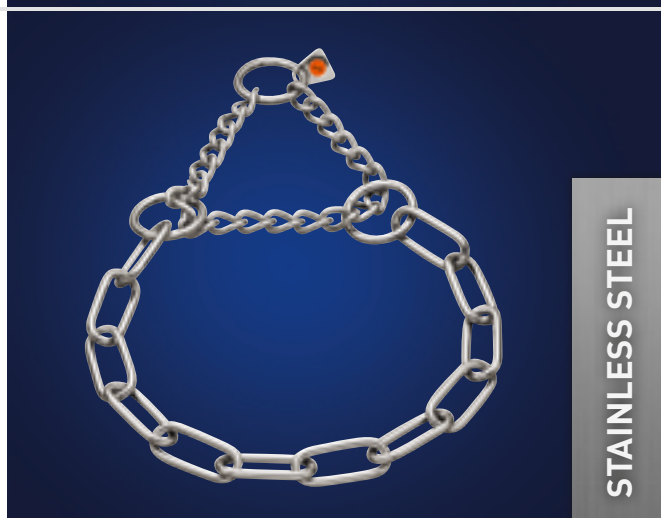
Collar

stainless steel



- Feature:** with assembly chain and welded ring
- Chain type:** long links
- long chain links
 - fur saving
 - choosing the right length: neck circumference of the dog + 5 cm

Article number	Length [cm]	Wire gauge	For dogs up to
51682 0__ 55	55 / 58 / 61 / 65	4.00 mm	60 kg



STAINLESS STEEL

Collar

stainless steel



- Feature:** with assembly chain and welded ring
- Chain type:** long links
- extra wide chain links
 - fur saving
 - choosing the right length: neck circumference of the dog + 5 cm

Article number	Length [cm]	Wire gauge	For dogs up to
51614 0__ 55	52 / 56 / 61 / 65 / 70	4.00 mm	60 kg



Key ring

stainless steel



- eminently strong
- suitable for individual adaptation of a tension limit for medium and long link collars

Article number	Wire gauge	Inner width
55950 025 55	2.00 mm	19 mm
55950 032 55	2.50 mm	25 mm





CUROGAN

THE NICKEL-FREE ALTERNATIVE **High quality dog collars made of CUROGAN**

This quality was developed for dogs that react to other materials with a discoloured fur. CUROGAN is an excellent alternative for over 90% of these dogs.

In addition to their anti-allergic properties (nickel-free), CUROGAN collars are very popular because of their appealing appearance. The high copper content gives the collar a brilliant color that darkens in use. With the help of our Diamond Paste, the original condition can be restored at any time.

Due to the high copper content, these chains have a higher material abrasion inside. Therefore we recommend to check the collars visually on a regular basis and to replace them in time.

- **special copper alloy with high strength**
- **solid material - polished**
- **nickel-free**
- **stainless**
- **maintenance with our Diamond Paste
(metal polish)**



NeckTech Fun with ClicLock

CUROGAN matt



Feature: 1 D-Ring

- appealing and unique appearance
- pleasant wearing comfort for all short- and long-haired breeds
- length can be varied by adding or removing individual links

Article number	Length	For dogs up to
50051 010 68	48 cm	45 kg
50051 014 68	60 cm	45 kg



Single Elements NeckTech Fun

CUROGAN matt



Feature: 2 pieces on self service card

- to extend the NeckTech Fun
- extension by 3 cm per replacement link

Article number	Length
50506 000 68	3 cm

CUROGAN



Collar

CUROGAN



Feature: 2 rings

Chain type: round

- runs very well through the ring due to the short links
- ideal for short haired breeds

Article number	Length [cm]	Wire gauge	For dogs up to
51112 0__ 67	40 / 45 / 50 / 55 / 60 / 65	3.00 mm	35 kg



Collar

CUROGAN



Feature: 2 rings

Chain type: medium

- medium sized links are sliding very well through the ring
- ideal for working with the dog
- attachment of an additional split ring for tension limitation possible

Article number	Length [cm]	Wire gauge	For dogs up to
51541 0__ 67	39 / 44 / 50 / 55 / 61 / 67	3.00 mm	35 kg

Collar
CUROGAN



Feature: 2 rings
Chain type: long links

- comfortable for long and fine fur due to link size and shape
- attachment of an additional split ring for tension limitation possible

Article number	Length [cm]	Wire gauge	For dogs up to
51506 0__ 67	46 / 50 / 54 / 58 / 62 / 66	3.00 mm	35 kg



Collar
CUROGAN



Feature: 2 rings
Chain type: long links

- comfortable for long and fine fur due to link size and shape
- attachment of an additional split ring for tension limitation possible

Article number	Length [cm]	Wire gauge	For dogs up to
51663 0__ 67	55 / 58 / 61 / 65 / 68	4.00 mm	70 kg



Collar
CUROGAN



Feature: 2 rings
Chain type: long links

- extra wide chain links
- comfortable for long and fine fur due to link size and shape
- attachment of an additional split ring for tension limitation possible

Article number	Length [cm]	Wire gauge	For dogs up to
51604 0__ 67	54 / 59 / 63 / 67 / 72 / 76	4.00 mm	70 kg

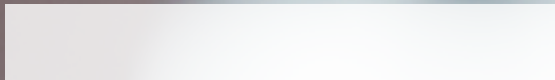


CUROGAN

DIAMOND PASTE CLEANS AND GIVES A NEW SHINE.

- Contains micro fine polishing granules, is kind to the skin, food-safe, non toxic and non acidic.
- Ideal for the care of **stainless steel** (55) and **Curogan** (67 + 68)





STEEL

HIGH GLOSS OPTICS COMBINED WITH A ROBUST SURFACE

High quality dog collars made of chrome-plated steel

Chrome-plated collars manufactured by SPRENGER are characterised by their high-gloss surface. The result is achieved by a special surface polish that ensures that the nickel and chrome layers adhere particularly well. The collars receive double and therefore long-term protection against rust.

Surface damage caused by external influences can attack the steel core. Therefore, we cannot give any guarantee against corrosion for collars and other articles made of steel.

- double rust protection by nickel and chrome layer
- high-gloss surface
- after cleaning with a mild detergent or rinsing agent, dry carefully



Collar

steel chrome plated

Feature: 2 rings

Chain type: round

- runs very well through the ring due to the short links
- ideal for short haired breeds
- in longer lengths purely decorative collar

Article number	Length [cm]	Wire gauge	For dogs up to
50301 ___ 02	27 / 30 / 40 / 45 / 60 / 80 / 100	1.00 mm	5 kg



Collar

steel chrome plated

Feature: 2 rings

Chain type: round

- runs very well through the ring due to the short links
- ideal for short haired breeds
- in longer lengths purely decorative collar

Article number	Length [cm]	Wire gauge	For dogs up to
50201 0__ 02	20 / 25 / 30 / 35 / 40 / 45 / 50 / 55	1.35 mm	8 kg



Collar

steel chrome plated

Feature: 2 rings

Chain type: round

- runs very well through the ring due to the short links
- ideal for short haired breeds
- in longer lengths purely decorative collar

Article number	Length [cm]	Wire gauge	For dogs up to
50702 0__ 02	25 / 30 / 35 / 40 / 45 / 50 / 55 / 60 / 65	1.50 mm	10 kg



Collar

steel chrome plated

Feature: 2 rings

Chain type: round

- runs very well through the ring due to the short links
- ideal for short haired breeds
- in longer lengths purely decorative collar

Article number	Length [cm]	Wire gauge	For dogs up to
50803 0__ 02	30 / 35 / 40 / 45 / 50 / 55 / 60 / 65 / 70 / 75 / 80	2.00 mm	20 kg

Collar

steel chrome plated



Feature: 2 rings

Chain type: round

- runs very well through the ring due to the short links
- ideal for short haired breeds
- in longer lengths purely decorative collar

Article number	Length [cm]	Wire gauge	For dogs up to
50903 0__ 02	35 / 40 / 45 / 50 / 55 / 60 / 65	2.50 mm	30 kg



Collar

steel chrome plated



Feature: 2 rings

Chain type: round

- runs very well through the ring due to the short links
- ideal for short haired breeds

Article number	Length [cm]	Wire gauge	For dogs up to
51112 0__ 02	40 / 45 / 50 / 55 / 60 / 65 / 70	3.00 mm	45 kg



Collar

steel chrome plated



Feature: 2 rings

Chain type: round

- runs very well through the ring due to the short links
- ideal for short haired breeds

Article number	Length [cm]	Wire gauge	For dogs up to
51381 0__ 02	45 / 50 / 55 / 60 / 65 / 70 / 75 / 80	4.00 mm	70



Collar

steel chrome plated



Feature: 2 rings

Chain type: round

- runs very well through the ring due to the short links
- ideal for short haired breeds
- especially suitable for Molosser breeds

Article number	Length [cm]	Wire gauge	For dogs up to
51401 0__ 02	60 / 65 / 70 / 75 / 80	5.00 mm	95 kg



STEEL



Collar

steel chrome plated

Feature: 2 rings

Chain type: flat polished

- very attractive appearance
- runs very well through the ring due to the short links
- ideal for short haired breeds
- in longer lengths purely decorative collar

Article number	Length [cm]	Wire gauge	For dogs up to
50722 0__ 02	30 / 35 / 40 / 45 / 50 / 55 / 60	1.50 mm	10 kg



Collar

steel chrome plated

Feature: 2 rings

Chain type: flat polished

- very attractive appearance
- runs very well through the ring due to the short links
- ideal for short haired breeds
- in longer lengths purely decorative collar

Article number	Length [cm]	Wire gauge	For dogs up to
50822 0__ 02	30 / 35 / 40 / 45 / 50 / 55 / 60 / 65	2.00 mm	20 kg



Collar

steel chrome plated

Feature: 2 rings

Chain type: flat polished

- very attractive appearance
- runs very well through the ring due to the short links
- ideal for short haired breeds
- in longer lengths purely decorative collar

Article number	Length [cm]	Wire gauge	For dogs up to
50922 0__ 02	35 / 40 / 45 / 50 / 55 / 60 / 65 / 70	2.50 mm	30 kg



Collar

steel chrome plated

Feature: 2 rings

Chain type: flat polished

- very attractive appearance
- runs very well through the ring due to the short links
- ideal for short haired breeds

Article number	Length [cm]	Wire gauge	For dogs up to
51122 0__ 02	40 / 45 / 50 / 55 / 60 / 65 / 70	3.00 mm	45 kg

Collar

steel chrome plated



Feature: 2 rings

Chain type: round and narrow

- very attractive appearance
- runs very well through the ring due to the short links
- ideal for short haired breeds

Article number	Length [cm]	Wire gauge	For dogs up to
51012 0__ 02	40 / 45 / 50 / 55 / 60 / 65 / 70 / 75	3.00 mm	45 kg



Collar

steel chrome plated



Feature: 2 rings

Chain type: round and narrow

- very attractive appearance
- runs very well through the ring due to the short links
- ideal for short haired breeds

Article number	Length [cm]	Wire gauge	For dogs up to
51391 0__ 02	45 / 50 / 55 / 60 / 65 / 70 / 75	4.00 mm	75 kg



Collar

steel chrome plated



Feature: 2 rings

Chain type: flat polished and narrow

- very attractive appearance
- runs very well through the ring due to the short links
- ideal for short haired breeds

Article number	Length [cm]	Wire gauge	For dogs up to
51022 0__ 02	50 / 55 / 60 / 65 / 70	3.00 mm	40 kg



Collar

steel chrome plated



Feature: 2 rings

Chain type: flat polished and narrow

- very attractive appearance
- runs very well through the ring due to the short links
- ideal for short haired breeds

Article number	Length [cm]	Wire gauge	For dogs up to
51372 0__ 02	50 / 55 / 60 / 65 / 70 / 75	4.00 mm	75 kg



STEEL



Collar with plate

steel chrome plated



Feature: 1 ring and 1 split ring
Chain type: round

- runs very well through the ring due to the short links
- neck size can be adjusted with the help of the split ring
- The leash has to be attached to the sealed ring!

Article number	Length [cm]	Wire gauge	For dogs up to
51101 0__ 02	45 / 50 / 55 / 60	3.00 mm	45 kg



Collar

steel chrome plated



Feature: with assembly chain and welded ring
Chain type: round

- choosing the right length: neck circumference of the dog + 5 cm
- in longer lengths purely decorative collar

Article number	Length [cm]	Wire gauge	For dogs up to
50781 0__ 02	30 / 35 / 40 / 45 / 50 / 55 / 60 / 65	1.50 mm	10 kg



Twin Row Martingale Collar

steel chrome plated



Feature: with assembly chain and welded ring
Chain type: flat polished

- choosing the right length: neck circumference of the dog + 5 cm
- in longer lengths purely decorative collar

Article number	Length [cm]	Wire gauge	For dogs up to
50881 0__ 02	35 / 40 / 45 / 50 / 55 / 60	2.00 mm	25 kg



Triple Row Martingale Collar

steel chrome plated



Feature: with assembly chain and welded ring
Chain type: flat polished

- choosing the right length: neck circumference of the dog + 5 cm

Article number	Length [cm]	Wire gauge	For dogs up to
50883 0__ 02	45 / 50 / 55 / 60 / 65	2.00 mm	40 kg

Collar

steel chrome plated



Feature: with toggle and ring

Chain type: round

- the collar is not pulled over the head
- especially suitable for dogs with a slim neck, but a strong head and body
- the application is shown by the order of the images on this page from top to bottom
- ideal for short haired breeds

Article number	Length [cm]	Wire gauge	For dogs up to
51336 0__ 02	35 / 40 / 45 / 50 / 55 / 60 / 65 / 70	2.00 mm	20 kg



Collar

steel chrome plated



Feature: with toggle and ring

Chain type: round

- the collar is not pulled over the head
- especially suitable for dogs with a slim neck, but a strong head and body
- the application is shown by the order of the images on this page from top to bottom
- ideal for short haired breeds

Article number	Length [cm]	Wire gauge	For dogs up to
50908 0__ 02	40 / 45 / 50 / 55 / 60 / 65 / 70	2.50 mm	30 kg



Collar

steel chrome plated



Feature: with toggle and ring

Chain type: flat polished and narrow

- the collar is not pulled over the head
- especially suitable for dogs with a slim neck, but a strong head and body
- the application is shown by the order of the images on this page from top to bottom
- ideal for short haired breeds

Article number	Length [cm]	Wire gauge	For dogs up to
51025 0__ 02	50 / 55 / 60 / 65	3.00 mm	40 kg



Collar

steel chrome plated



Feature: with toggle and ring

Chain type: medium

- the collar is not pulled over the head
- especially suitable for dogs with a slim neck, but a strong head and body
- the application is shown by the order of the images on this page from top to bottom
- ideal for short haired breeds

Article number	Length [cm]	Wire gauge	For dogs up to
51629 0__ 02	50 / 55 / 60 / 65	3.40 mm	55 kg



STEEL



Halskette mit SPRENGER-Haken

steel chrome plated



- Feature:** 1 ring and SPRENGER hook 60250
- new position of the ring for an optimized wearing comfort
- Chain type:** medium
- fur saving
 - easy to adjust to the neck size

Article number	Length [cm]	Wire gauge	For dogs up to
51530 0__ 02	45 / 50 / 55 / 60 / 65	3.00 mm	40 kg



Collar

steel chrome plated



- Feature:** 2 rings
- medium sized links are sliding very well through the ring
 - ideal for working with the dog
 - attachment of an additional split ring for tension limitation possible
- Chain type:** medium

Article number	Length [cm]	Wire gauge	For dogs up to
51520 0__ 02	35 / 40 / 45 / 50 / 55 / 60 / 65	3.00 mm	40 kg



Collar

steel chrome plated



- Feature:** 2 rings
- medium sized links are sliding very well through the ring
 - ideal for working with the dog
 - attachment of an additional split ring for tension limitation possible
- Chain type:** medium

Article number	Length [cm]	Wire gauge	For dogs up to
51620 0__ 02	45 / 50 / 55 / 60 / 65 / 70 / 75	3.40 mm	55 kg



Collar

steel chrome plated



- Feature:** 2 rings
- recommended for VDH tests of small breeds
 - attachment of an additional split ring for tension limitation possible
- Chain type:** long links

Article number	Length [cm]	Wire gauge	For dogs up to
51451 0__ 02	27 / 32 / 36 / 40 / 45 / 49 / 54	2.00 mm	25 kg

Collar

steel chrome plated



Feature: 2 rings

Chain type: long links

- comfortable for long and fine fur due to link size and shape
- attachment of an additional split ring for tension limitation possible

Article number	Length [cm]	Wire gauge	For dogs up to
51506 0__ 02	42 / 46 / 50 / 54 / 58 / 62 / 66	3.00 mm	45 kg



Collar

steel chrome plated



Feature: 2 rings

Chain type: long links

- extra wide links with slightly smaller wire gauge
- suitable for long and fine fur
- hardly visible with long fur
- attachment of an additional split ring for tension limitation possible

Article number	Length [cm]	Wire gauge	For dogs up to
51566 0__ 02	54 / 59 / 63 / 68	3.40 mm	55 kg



Collar

steel chrome plated



Feature: 2 rings

Chain type: long links

- comfortable for long and fine fur due to link size and shape
- attachment of an additional split ring for tension limitation possible

Article number	Length [cm]	Wire gauge	For dogs up to
51663 0__ 02	51 / 55 / 58 / 61 / 65 / 68	4.00 mm	80 kg



Collar

steel chrome plated



Feature: 1 ring and 1 split ring

Chain type: long links

- neck size can be adjusted with the help of the split ring
- can be used for dogs of different sizes
- The leash has to be attached to the sealed ring!

Article number	Length [cm]	Wire gauge	For dogs up to
51661 0__ 02	55 / 58 / 61 / 65 / 68	4.00 mm	80 kg



STEEL



Collar

steel chrome plated

Feature: 2 rings
Chain type: long links

- extra wide links
- comfortable for long and fine fur due to link size and shape
- attachment of an additional split ring for tension limitation possible

Article number	Length [cm]	Wire gauge	For dogs up to
51604 0__ 02	50 / 54 / 59 / 63 / 67 / 72 / 76 / 80 / 84	4.00 mm	80 kg



Collar

steel chrome plated

Feature: 1 ring and extra long middle link
Chain type: long links

- extra long middle-link
- the leash is attached to the long middle link for minimum impact
- fur saving

Article number	Length [cm]	Wire gauge	For dogs up to
51632 0__ 02	45 / 48 / 51 / 54 / 57 / 60 / 63 / 66 / 69	4.00 mm	80 kg



Leash Protection Chain

steel chrome plated

Feature: 1 swivel and 1 SPRENGER scissor snap hook 60020
Chain type: round

- no more chewed leashes
- most common application as connection between collar and textile leash

Article number	Length	Wire gauge	For dogs up to
52150 040 02	40 cm	1.50 mm	10 kg
52200 040 02	40 cm	2.00 mm	20 kg
52420 040 02	40 cm	3.00 mm	45 kg



Chain Leashes

steel chrome plated

Feature: 1 ring and 1 snap hook 60490
Chain type: round

- for completion with a hand strap

Article number	Length	Wire gauge	For dogs up to
53465 080 02	80 cm	2.00 mm	20 kg
52304 080 02	80 cm	2.50 mm	30 kg
52403 080 02	80 cm	3.00 mm	45 kg

Coupling chain

steel chrome plated



Feature: 1 ring and 2 SPRENGER scissor snap hook 60020 with swivel

■ for simultaneously leading two dogs on one leash

Chain type: round

Article number	Length	Wire gauge	For dogs up to
51900 038 02	38 cm	1.50 mm	10 kg
51950 042 02	42 cm	3.00 mm	45 kg



Coupling chain

steel chrome plated



Feature: 1 ring and 2 snap hooks 60490

■ for simultaneously leading two dogs on one leash

Chain type: round

Article number	Length	Wire gauge	For 2 dogs up to
51905 040 02	40 cm	1.50 mm	10 kg
51927 033 02	33 cm	2.00 mm	15 kg
51949 042 02	42 cm	2.50 mm	20 kg
51955 048 02	48 cm	3.00 mm	45 kg
51955 056 02	56 cm	3.00 mm	45 kg
51984 075 02	75 cm	3.00 mm	45 kg



Coupling chain

steel chrome plated



Feature: 1 ring and 2 SPRENGER hooks 60250

■ for simultaneously leading two dogs on one leash

Chain type: round

Article number	Length	Wire gauge	For 2 dogs up to
51993 061 02	61 cm	4.00 mm	100 kg



ADVANTAGES COMPARED TO NYLON & LEATHER COLLARS

- Highly polished surfaces which do not absorb any water and dry very quickly
- No conditions for parasites and no bad smells from wet material
- Easy cleaning and care
- Less problems with damaged hair if the most suitable links are chosen
- Comfortable for the dog to wear

STEEL



Halter Chain

steel nickel plated

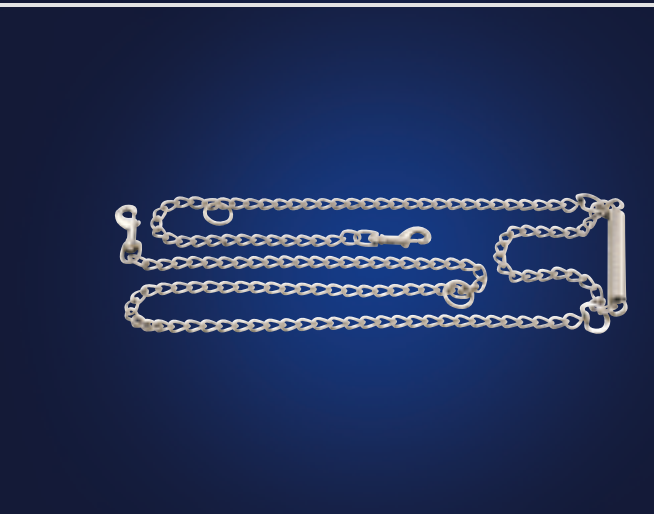


Feature: 1 gag and 1 SPRENGER hook 60250

■ for training purposes only

Chain type: round

Article number	Length	Wire gauge
54100 200 01	200 cm	3.00 mm



Halter Chain

steel nickel plated

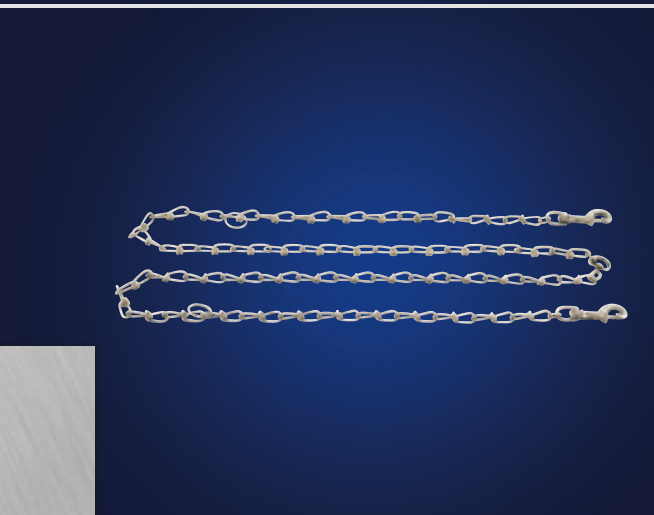


Feature: 2 snap hooks 60400 and relief spring

■ for training purposes only

Chain type: round

Article number	Length	Wire gauge
55711 200 01	200 cm	4.00 mm



Halter Chain

steel nickel plated



Feature: 2 snap hooks 60400

■ for training purposes only

Chain type: knotted chain

Article number	Length	Wire gauge
55104 250 01	250 cm	3.40 mm



Key ring

steel nickel plated



- suitable for individual adaptation of a tension limit for medium and long link collars
- very stable design in the inner widths 25, 30 and 32 mm

Article number	Wire gauge	Inner width
55950 009 01	0.80 mm	7.5 mm
55950 012 01	0.75 mm	10 mm
55950 018 01	1.20 mm	15 mm
55950 025 01	2.00 mm	19 mm
55950 030 01	2.50 mm	23 mm
55950 032 01	2.50 mm	24 mm



Dog chain collars as per animal welfare understanding

Leading with **feeling**

- The featured dog chain collars meet the conditions of recent requests for animal welfare and comply with the legal regulations in e.g. Austria and Switzerland.
- We offer three different chain types for small, medium large and large dogs or for short, medium and long haired dogs.
- The SPRENGER hook will ensure a very easy and comfortable fitting, as you no longer pull the chain over the dog's head.
- By using the hook the chain is individually adjustable: while the dog is growing, the volume of the fur differs or the dog is not leashed (see page 26-27).



A close-up, out-of-focus photograph of a dog's fur, likely a long-haired breed like a Shetland Sheepdog, showing shades of brown and grey. The fur is the background for the left side of the page.

ACCESSORIES

WITH LOVE AND CARE

Selected accessories with premium quality

SPRENGER offers you a small selection of accessories which do not come solely from our own production, but which completely correspond to our quality standards.

Due to long-standing partnerships with our suppliers, we also guarantee high quality articles in this product area.

- **silent training whistles from our in-house production**
- **rubberized leashes with reliable snap hooks**
- **jute toys made by our partners in the EU**



Display

steel powder-coated

Feature: 6 display hooks and 1 magnetic sign

- attractive presentation for a compact SPRENGER chain range
- easy attachment to any perforated wall due to flexible hooks
- a safety bar shields the ends of the fabric hooks
- dimensions: (w) 42 x (h) 20 x (d) 29 cm
- flexible exchange of different presentations, as the fabric hooks also fit to any perforated wall
- each rack with 6 hooks (Art. 55920 999 01)

Article number	Color
55919 000 00	dark blue



Display, L-Form

perforated plate, powder-coated

Feature: demountable

- Euro perforation suitable for all common perforated wall hooks
- floor base made of solid sheet metal
- great stability
- arbitrarily expandable
- display is delivered disassembled
- dimensions: (w) 63.5 x (h) 205 x (d) 48 cm

Article number	Color
55935 000 00	gray

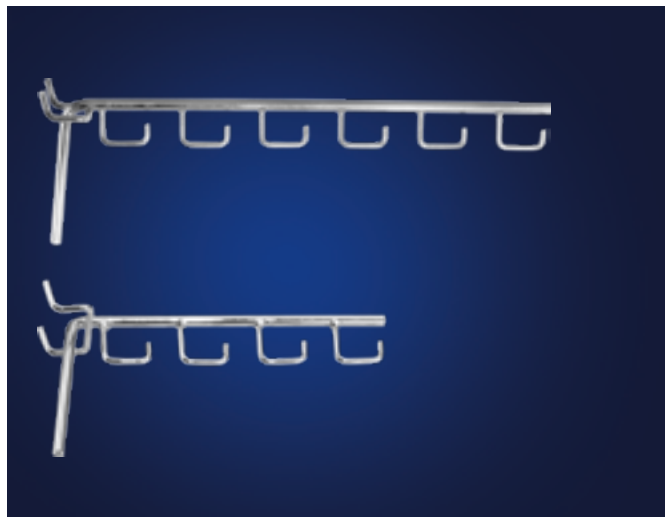


Display-Hooks

steel nickel plated

- suitable for all SPRENGER displays and common perforated wall systems

Article number	Length	Feature
55920 999 01	25 cm	6 bottom hooks
55921 999 01	17 cm	4 bottom hooks



Merchandise hook with hanger

steel zinc plated

- suitable for storing, sorting and transporting chains

Article number	Inner width
55901 120 06	120 mm



SOS-Clips

plastic

Color: mixed in colour

Feature: 1 box = 100 pieces

- water-resistant
- light & silent
- self-labeling
- can be used as a dog tag, but also for sports and travel bags

Article number	Measure
63515 000 00	38 x 25 mm



Power-Hole-Punch

- 70 % power saving compared to conventional punch pliers
- for processing leather
- faster wear of pipes with plastics such as Biothane®

Article number	Length
57507 002 00	25 cm





PARACORD Collar

Feature: reflective
with ClicLock fastening
(stainless steel)

Width: 19 mm

Color: black

- attractive design
- durable
- mud and water repellent
- washable
- reflective

Article number	Length [cm]
59340 0__ 71	30 / 35 / 40 / 45 / 50 / 55 / 60



PARACORD Collar

Feature: reflective
with ClicLock fastening
(stainless steel)

Width: 19 mm

Color: orange

- attractive design
- durable
- mud and water repellent
- washable
- reflective

Article number	Length [cm]
59340 0__ 77	30 / 35 / 40 / 45 / 50 / 55 / 60



PARACORD Collar

Feature: reflective
with ClicLock fastening
(stainless steel)

Width: 19 mm

Color: neon yellow

- attractive design
- durable
- mud and water repellent
- washable
- reflective

Article number	Length [cm]
59341 0__ 00	30 / 35 / 40 / 45 / 50 / 55 / 60



PARACORD Collar

Feature: reflective
with ClicLock fastening
(stainless steel)

Width: 19 mm

Color: neon pink

- attractive design
- durable
- mud and water repellent
- washable
- reflective

Article number	Length [cm]
59342 0__ 00	30 / 35 / 40 / 45 / 50 / 55 / 60

PARACORD Collar

Feature: reflective
with ClicLock fastening
(stainless steel)

Width: 19 mm

Color: green

- attractive design
- durable
- mud and water repellent
- washable
- reflective

Article number	Length [cm]
59343 0__ 00	30 / 35 / 40 / 45 / 50 / 55 / 60



PARACORD Collar

Feature: reflective
with ClicLock fastening
(stainless steel)

Width: 19 mm

Color: blue

- attractive design
- durable
- mud and water repellent
- washable
- reflective

Article number	Length [cm]
59344 0__ 00	30 / 35 / 40 / 45 / 50 / 55 / 60



Rubberized leash

polypropylene

Feature: with hand strap

Width: 19 mm

Article number	Length	Color
59230 100 76	100 cm	blue
59230 120 70	120 cm	pink
59230 120 71	120 cm	black
59230 120 73	120 cm	green
59230 200 70	200 cm	pink
59230 200 71	200 cm	black
59230 200 73	200 cm	green
59230 200 76	200 cm	blue

- light and space saving
- safe and comfortable touch
- remains light and easy to handle even when exposed to rain and water
- easy cleaning
- quick drying



Rubberized leash

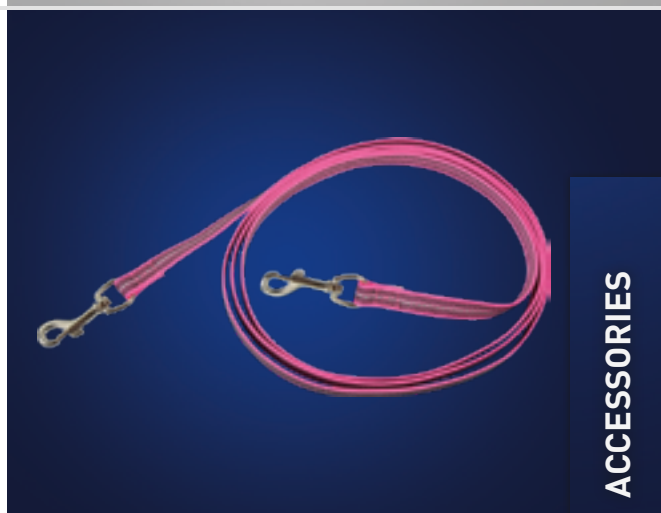
polypropylene

Feature: with 2 snap hooks

Width: 19 mm

Article number	Length	Color
59230 300 70	300 cm	pink
59230 300 71	300 cm	black
59230 300 73	300 cm	green

- light and space saving
- safe and comfortable touch
- remains light and easy to handle even when exposed to rain and water
- easy cleaning
- quick drying





Rubberized leash

polypropylene

Feature: without hand strap

Width: 19 mm

- safe and comfortable touch
- remains light and easy to handle even when exposed to rain and water
- easy cleaning
- quick drying



Article number	Length	Color
59230 101 70	100 cm	pink
59230 101 71	100 cm	black
59230 101 73	100 cm	green
59230 201 70	200 cm	pink
59230 201 71	200 cm	black
59230 201 73	200 cm	green
59230 301 70	300 cm	pink
59230 301 71	300 cm	black
59230 301 73	300 cm	green
59230 301 76	300 cm	blue
59230 501 70	500 cm	pink
59230 501 71	500 cm	black
59230 501 73	500 cm	green
59230 501 76	500 cm	blue



Rubberized tracking-leash

polypropylene

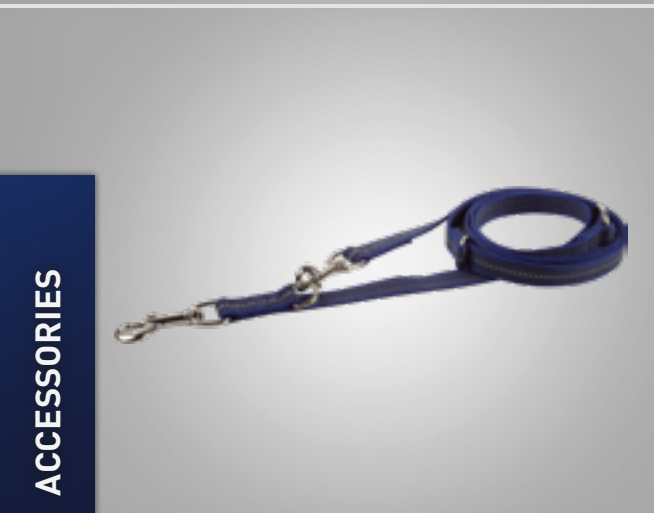
Feature: without hand strap

Width: 19 mm

- safe and comfortable touch
- remains light and easy to handle even when exposed to rain and water
- easy cleaning
- quick drying
- ideal for tracking dogs and mantrailing



Article number	Length	Color
59230 999 70	10 m	pink
59230 999 71	10 m	black
59230 999 73	10 m	green
59230 999 76	10 m	blue
59230 995 70	15 m	pink
59230 995 71	15 m	black
59230 995 73	15 m	green
59230 995 76	15 m	blue



Rubberized leash

polypropylene

Length: 230 cm

Feature: 3-way adjustable

Width: 19 mm

- light and space saving
- safe and comfortable touch
- remains light and easy to handle even when exposed to rain and water
- easy cleaning
- quick drying



Article number	Color
59230 230 70	pink
59230 230 71	black
59230 230 73	green
59230 230 76	blue

Agility Leash

nylon



Length: 120 cm

Feature: with quick release

Width: 20 mm

Color: black

- quick release due to the ClicLock fastening
- neopren padding at the collar for the best wearing comfort

Article number	Neck size
59214 030 71	30 cm
59214 040 71	40 cm
59214 050 71	50 cm
59214 060 71	60 cm



Handle

steel nickel plated

For dogs up to: 90 kg

Feature: with SPRENGER hook 60250

- with braided polypropylene hand strap
- hook with 450 kg as guaranteed breaking load

Article number	Length
60250 075 V1	48 cm



Biba - Dog brush

pear wood, oiled

Feature: bristles strong polypropylene

- elastic strap
- strong bristles gently remove dried dirt
- helpful when changing fur
- oiled wood surface

Article number	Measure
57241 000 00	135 x 70 mm



Biba - Dog brush

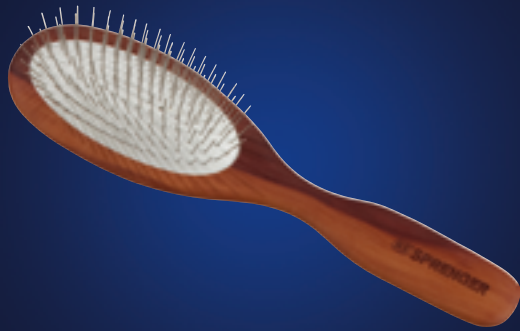
pear wood, oiled

Feature: pure natural bristle of frayed agave leaves

- elastic strap
- also known as cactus bristle
- antistatic due to the natural bristles
- for cleaning and care of short fur
- can also be used as a massage brush

Article number	Measure
57251 000 00	135 x 70 mm





Biba - Dog brush

pear wood, oiled

Feature: metal pins

- universal brush for daily grooming
- comfortable handle shape

Article number	Measure
57231 000 00	240 x 63 mm



Biba - Dog brush

pear wood, oiled

Feature: extra long metal pins

- suitable for particularly long and fine coats
- perfect for daily grooming

Article number	Measure
57232 000 00	240 x 63 mm



Biba - Dog brush

pear wood, oiled

Feature: extra thick metal pins

- suitable for every coat
- massage effect through the extra thick and rounded pins
- particularly gentle to the skin
- ideal for grooming young dogs

Article number	Measure
57233 000 00	240 x 63 mm



Biba - Dog comp

pear wood, oiled

Feature: steel tines: 30 mm

- professional hair comb
- especially suitable for breeds with dense and long coat
- comfortable handle shape

Article number	Measure
56751 000 00	230 x 25 mm

Biba - Dog rake

pear wood, oiled

Feature: 2 rows
steel tines: 20 mm

- for grooming problem zones
- not for daily care

Article number	Measure
57052 000 00	163 x 55 mm



Biba - Dog rake

pear wood, oiled

Feature: 3 rows
steel tines: 20 mm

- for grooming problem zones
- not for daily care

Article number	Measure
57053 000 00	163 x 55 mm



Brush- and Comb-cleaner

beech wood

- removes hair from brushes and combs effortlessly
- also suitable for round brushes

Article number
57239 000 00



Biba - Brush Cleaner

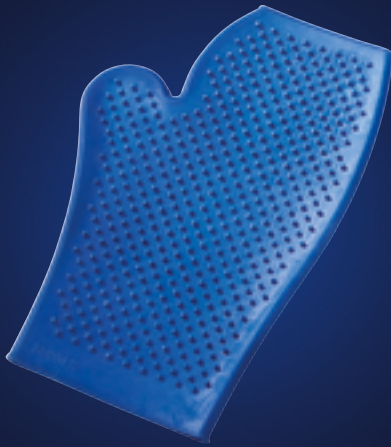
pear wood, oiled

Feature: long and strong polypropylene bristles

- removes not only hair, but also gently cleans in particular the rubber cushions of our high-quality brushes

Article number	Measure
57238 000 00	93 x 51 mm



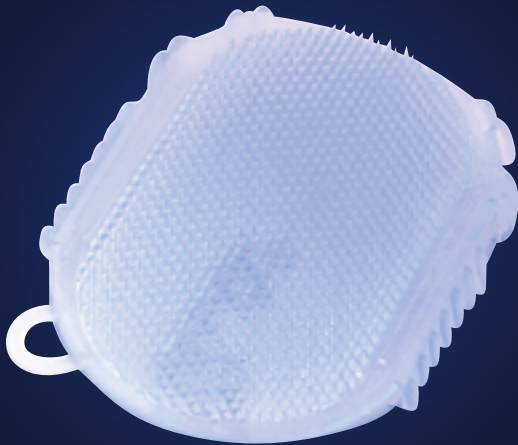


Grooming glove

plastic

- recommended for short-haired dogs
- removes necrotic hair
- tip: removes hair from textile seating furniture equally good

Article number	Color	Measure
57160 000 00	mixed in colour	235 x 115 mm



Gel-Massage glove

plastic

- recommended for short-haired dogs
- soft and cuddly material for a gentle massage of the dog
- ideal for training the grooming with a puppy

Article number	Color	Measure
57160 002 00	pastel blue	115 x 150 mm



Curry comb

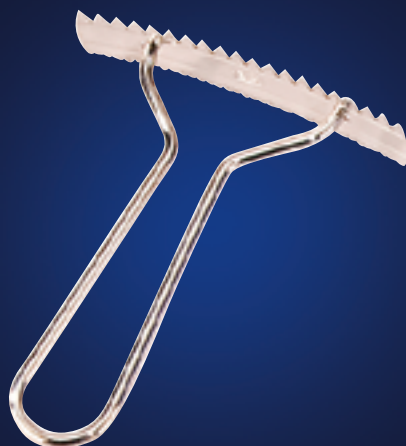
elastic

Color: black

Feature: oval

- suitable for women's and children's hands
- removes dried dirt

Article number	Measure
57130 000 71	125 x 50 mm



Dog rake

steel nickel plated

- Handle and blade can be disassembled
- one side coarse, one side fine
- removes dried dirt

Article number	Measure
57020 000 01	123 x 99 mm

Dog rake

Steel coated

Color: black

Feature: 1-row

- antistatic coating of the scraper
- easy-to-hold
- to remove the undercoat

Article number	Measure
57592 000 00	155 x 110 mm



Nail Clipper with Safety-Stop

stainless steel

Feature: black plastic handle

- solid design
- comfortable and safe handling
- black plastic handle
- safety stop to regulate the cutting depth

Article number	Length
57504 000 55	130 mm



Throwing Chain

steel nickel plated

Length: 20 cm

- high pitched and sonorous through unwelded chain-links
- effects the dog's attention
- belongs in skilled hands



Article number	Wire gauge
58180 020 01	3.40 mm



Bracket Hook

stainless steel

- for short-term leashing of dogs
- must be screwed firmly to the substrate

Article number	Measure
55980 000 55	50 x 40 mm





Toy
leather

Feature: with one hand strap

- material and filling: medium
- soft but resistant material
- thickness 4 cm for small dogs
- thickness 6 cm for medium-sized dogs
- thickness 8–9 cm for larger dogs



Article number	Weight	Measure
58196 000 00	0.034 kg	20 x 4 cm
58196 001 00	0.045 kg	30 x 4 cm
58196 005 00	0.072 kg	21 x 6 cm
58196 006 00	0.122 kg	24 x 8 cm
58196 007 00	0.258 kg	30 x 9 cm



Toy
fire hose

Feature: with one hand strap

- material and filling: very firm
- floating
- thickness 3.5–4 cm for small and medium-sized dogs
- thickness 8 cm for large and strong dogs



Article number	Weight	Measure
58196 008 00	0.047 kg	20 x 3.5 cm
58196 009 00	0.075 kg	30 x 4 cm
58196 010 00	0.315 kg	40 x 8 cm



Toy
cotton

Feature: with one hand strap

- material and filling: soft
- for small and middle dogs
- perfect for playing and exercising with puppies



Article number	Weight	Measure
58197 004 00	0.045 kg	19 x 4 cm
58197 005 00	0.058 kg	30 x 4 cm



Toy
jute

Feature: with one hand strap

- material and filling: firm
- usable for training and professional dog sport
- thickness 6.5 cm for medium-sized dogs
- thickness 8.5–9 cm for large and strong dogs



Article number	Weight	Measure
58197 001 00	0.24 kg	30 x 8.5 cm
58197 002 00	0.4 kg	38 x 9.5 cm
58197 003 00	0.14 kg	30 x 6.5 cm

Caoutchouc Ball

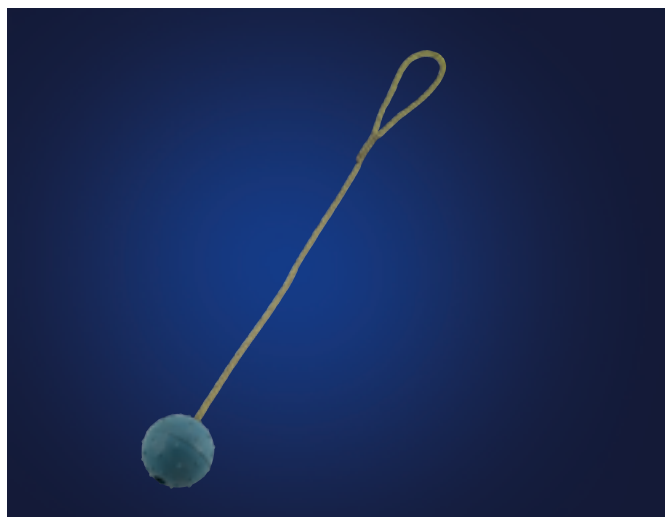
natural caoutchouc

Feature: with extra long hand strap

Color: varicolored

- 2 in 1: as heavy as a solid rubber and floating as a foam rubber ball
- colors vary
- firm knot inside the ball

Article number	Ø Diameter
58198 007 00	5 cm
58198 008 00	6 cm
58198 009 00	7 cm



Rubber Ball

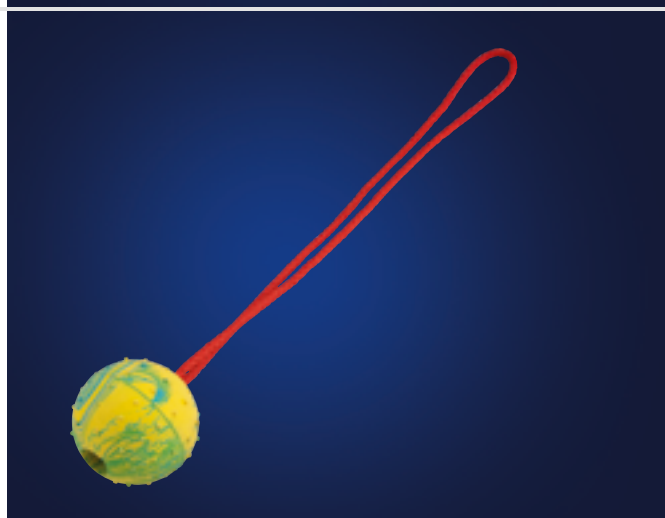
elastomer

Feature: with hand strap

Color: varicolored

- solid material
- colors vary
- firm knot inside the ball

Article number	Ø Diameter
58198 001 00	6 cm
58198 003 00	7.5 cm
58198 006 00	5 cm



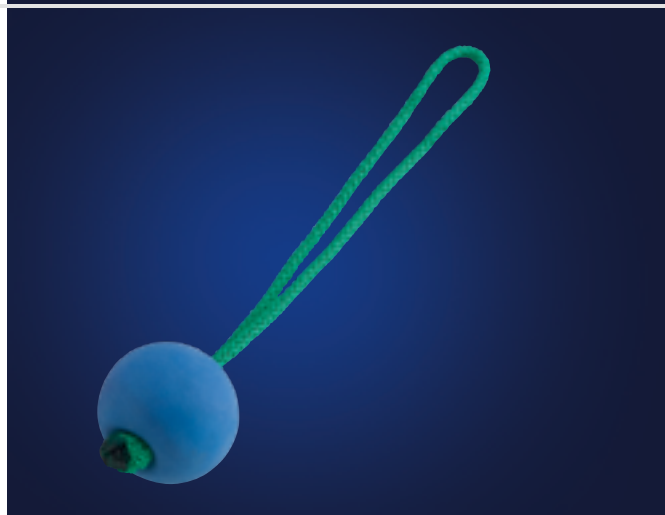
Soft Rubber Ball

elastomer

Feature: with hand strap

- solid material
- light and floating
- firm knot

Article number	Color	Ø Diameter
58198 010 00	yellow	6.5 cm
58198 010 74	red	6.5 cm
58198 010 76	blue	6.5 cm



Signal Horn

brass polished

- popular tool in dog training
- strong and clear sound
- with chain

Article number	Length
59551 000 30	27 cm





Soundless Training Whistle

brass polished, nickel-plated

Feature: plastic cover

- for human scarcely audible
- audible range for the dog up to 400 meters
- constant pitch by locking the secure nut on the adjustment screw
- protective sleeve

Article number	Length
57480 000 31	75 mm



Soundless Training Whistle

brass polished, nickel-plated

Feature: plastic cover and sleeve

- for human scarcely audible
- audible range for the dog up to 400 meters
- constant pitch by locking the secure nut on the adjustment screw
- protective sleeve
- additional black cap to secure the individual tonal adjustment

Article number	Length
57481 000 31	85 mm



Soundless Training Whistle

brass polished, nickel-plated

Feature: plastic cover, sleeve and chain

- for human scarcely audible
- audible range for the dog up to 400 meters
- constant pitch by locking the secure nut on the adjustment screw
- protective sleeve
- additional black cap to secure the individual tonal adjustment
- plus chain to attach

Article number	Length
57481 060 31	85 mm



Dog whistle

buffalo horn

Color: black

- with a kick & a trill
- with textile cord to hang around the neck

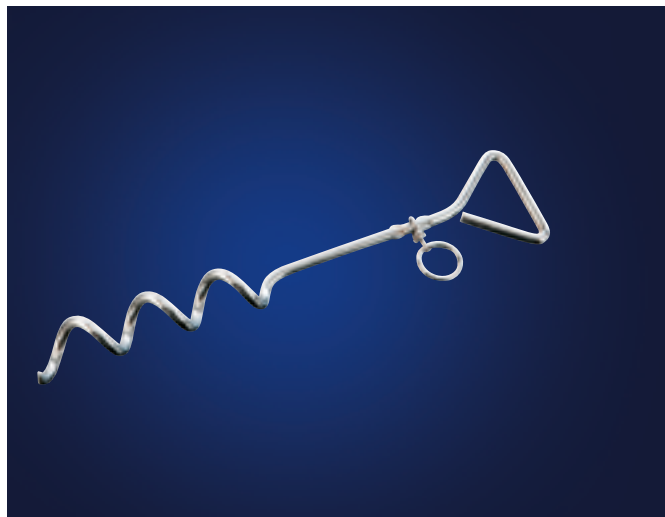
Article number	Length
57464 000 00	60 mm
57465 000 00	90 mm

Spiral stake

steel chrome plated

- for leashing dogs
- can be simply screwed into the lawn and sandy ground
- material Ø 8–9 mm

Article number	Length
55990 460 02	44 cm



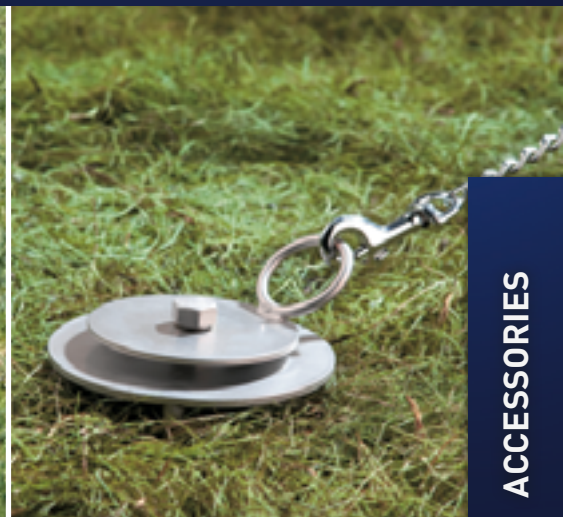
Run-Block

stainless steel



- all components are made of stainless steel
- three additional fixing poles for stabilizing the block Ø 10 mm
- also suitable for strong dogs
- must be hammered into the ground
- 360° turntable with welded eye as lashing point

Article number	Length
55991 000 56	40 cm





Snap-Hook

zinc die-casting, nickel plated

Article number	Length	Inner width
60490 050 45	50 mm	11 mm
60490 065 45	65 mm	13 mm
60490 075 45	75 mm	13 mm
60490 080 45	80 mm	16 mm
60490 085 45	85 mm	20 mm
60491 090 45	90 mm	20 mm



Snap-Hook

zinc die-casting, nickel plated

Article number	Length	Inner width
60493 016 45	77 mm	16 mm
60493 019 45	77 mm	19 mm
60493 025 45	77 mm	25 mm



SPRENGER Hook

steel nickel plated

Article number	Length	Inner width
60250 045 01	45 mm	11 mm
60250 055 01	55 mm	15 mm
60250 075 01	75 mm	20 mm

- stamped components
- high strengths
- stable & durable



SPRENGER Hook

stainless steel

Article number	Length	Inner width
60250 045 55	45 mm	11 mm
60250 055 55	55 mm	16 mm
60250 155 55	60 mm	20 mm
60250 075 55	75 mm	20 mm

- stamped components
- high strengths
- stable & durable



Key ring

steel nickel plated



- suitable for individual adaptation of a tension limit for medium and long link collars
- very stable design in the inner widths 25, 30 and 32 mm

Article number	Wire gauge	Inner width
55950 009 01	0.80 mm	7.5 mm
55950 012 01	0.75 mm	10 mm
55950 018 01	1.20 mm	15 mm
55950 025 01	2.00 mm	19 mm
55950 030 01	2.50 mm	23 mm
55950 032 01	2.50 mm	24 mm



Key ring

stainless steel



- eminently strong
- suitable for individual adaptation of a tension limit for medium and long link collars

Article number	Wire gauge	Inner width
55950 025 55	2.00 mm	19 mm
55950 032 55	2.50 mm	25 mm



Sheet Shackle

stainless steel



Feature: with screw fitting

- recommended for a safe and limited traction effect on SPRENGER long link chains

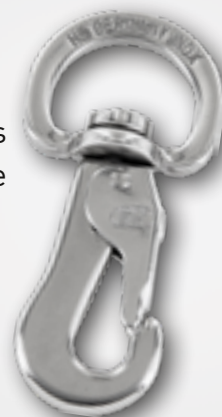
Article number	Wire gauge
66100 004 56	4.00 mm




SPRENGER FITTINGS

The SPRENGER product range includes a wide range of buckles, snap hooks and other fittings, which leading brand manufacturers in the leather and textile processing industry have been using for years.

IN FUTURE YOU WILL FIND OUR RANGE OF FITTINGS IN A SEPARATE BROCHURE.



guaranteed tensile strength of each quality in daN 1 daN corresponds to 1 kp		chain-no. wire gauge mm	steel	stainless steel	Curogan
		50300 1.00 mm, round	25 kp		
		50400 1.35 mm, round	40 kp		
		50700 1.50 mm, round	50 kp		
		50720 1.50 mm, flat	50 kp		
		50800 2.00 mm, round	110 kp	130 kp	
		50820 2.00 mm, flat	110 kp		
		50900 2.50 mm, round	150 kp	210 kp	
		50920 2.50 mm, flat	150 kp		
		51100 3.00 mm, round	240 kp	300 kp	190 kp
		51120 3.00 mm, flat	240 kp		
		51000 3.00 mm, round narrow	210 kp	330 kp	
		51020 3.00 mm, flat narrow	210 kp		
		51390 4.00 mm, round narrow	390 kp		

Curogan	stainless steel	steel	chain-no. wire gauge mm	guaranteed tensile strength of each quality in daN 1 daN corresponds to 1 kp	
	470 kp	370 kp	51380 4.00 mm, round		
		480 kp	51400 5.00 mm, round		
		120 kp	51450 2.00 mm, long		
		220 kp	51515 3.00 mm, medium		
210 kp	280 kp		51540 3.00 mm, medium		
210 kp	300 kp	260 kp	51500 3.00 mm, long		
	300 kp		51550 3.00 mm, long		
		280 kp	51615 3.40 mm, medium		
	440 kp		51640 4.00 mm, medium		
360 kp	470 kp	400 kp	51660 4.00 mm, long		
320 kp	410 kp	380 kp	51600 4.00 mm, long		

A

ACCESSORIES 46–62
Agilityleash 53

B

Balls..... 59
Bracket hook..... 57
Brushes and -cleaner 53–55

C

Caoutchouc ball..... 59
Chain Leashes 42
CHROME..... 33–44
CUROGAN 28–31

Collars „medium“

Stainless steel black 15, 16, 18
Stainless steel matt 9, 11
Stainless steel 24, 25
Curogan 30
Steel chrome-plated 39, 40

Collars with long links

Stainless steel black 16, 17
Stainless steel matt 10
Stainless steel 25–27
Curogan 31
Steel chrome-plated 41, 42

Collars with martingale chain

Stainless steel black 15
Stainless steel matt 9
Stainless steel 22, 26, 27
Steel chrome-plated 38

Collars with plate

Stainless steel matt 9
Steel chrome-plated 38

Collars with short links

Stainless steel black 14, 15
Stainless steel matt 8
Stainless steel 23, 24
Curogan 30
Steel chrome-plated 33–38
Comb 54
Coupling chain 43
Curry Comb..... 53–55

D

Display hook..... 49
Displays 49

G

Grooming glove 56

H

Hole punch 49

I

INFO..... 4–5, 63–64

K

Knotted chain..... 44

L

Leash protection chain 42
Leashes 51–53

M

Merchandise hooks 49

N

Nail clipper..... 57

NeckTech FUN (incl. single elements)

Stainless steel black matt 14
Stainless steel matt 8
Stainless steel 22
Curogan matt..... 30

P

Paracord Collars 50–51

R

Rake..... 55–57
Recommended qualities 5
Retrieving chain Knut Fuchs 24
Rubber ball..... 59
Rubberized leashes..... 51–53
Run block 61

S

S.O.S. Clips..... 49
Sheet shackle 63
Short leash..... 52
Signal horn..... 59
Snap hook..... 62
Soft rubber ball 59
Soundless training whistle 60
Spiral stake 57
Split rings 27, 63
SPRENGER-hook 62
STAINLESS STEEL 21–27
STAINLESS STEEL black..... 13–18
STAINLESS STEEL matt..... 7–11
STEEL chrome-plated 33–44

T

Terms and conditions..... 66
Throwing chain 56
Toggle chain 39
Toys 58
Tracking leash 52
Triple row collar 38
Twin row collar 38

W

Whistle..... 60

I. Scope of Application:

- The following General Business Conditions will apply to all transactions with Herm. Sprenger Metallwarenfabrik GmbH & Co. KG (hereinafter known as "the supplier"), i.e. all contracts, deliveries and other services and shall be deemed to be incorporated into future business relationships even when reference has not especially been made to the same. The validity of the purchaser's General Terms of Business is discounted.
- Any deviations from these General Terms of Business will only become an integral part of the contract if such deviations constitute the subject matter of an express agreement in writing entered into between the purchaser and the supplier.

II. Subject Matter of Contract/Prices:

- Decisive for the contents and scope of deliveries and services is the written confirmation of order from the supplier. If no such confirmation has been issued then the quotation from the supplier is decisive. Should there be no quotation, then the supplier's current price list is decisive. Confirmation of order by data telecommunication, EDP-printout and electronically transferred order confirmations and quotations are to be considered as valid even without signature.
- Our quotations will be valid for 8 days, whereafter they lose their validity.
- Orders received via our agents and/or sales representatives together with subsidiary agreements, supplements, etc. require confirmation in the above mentioned form (written) to become effective.
- All the technical data contained in our catalogues and other sales documentation, lists and drawings as well as details of weights and measures have been drawn up with all due diligence; obvious mistakes are subject to subsequent correction.
- The price lists applicable at the time of entering into the contract constitute the basis for price calculations or alternatively the prices in the specific quotations. All prices are understood to be ex works and do not include the Value Added Tax applicable on the day of delivery or services performed and do not include any transport and packaging costs.
- For orders of low value, we reserve the right to charge a processing fee.

III. Delivery Terms/Delayed Deliveries:

- The observance of agreed periods for deliveries and performance of services or delivery dates is conditional on the timely receipt of all specifications and documents to be communicated by the purchaser as well as the compliance with the payment conditions agreed upon together with any other obligations through the purchaser. Should these prerequisites not be fulfilled punctually, then the delivery dates will be delayed commensurately.
- Transactions for delivery by a fixed date (§ 376 German Commercial Code) require explicit written confirmation.
- Should the non-compliance of delivery dates or service periods be caused by Force Majeure, e.g. mobilization, war, uprising, or any similar events, such as strike, lock-outs etc., then the dates or periods will be commensurately extended. The same is to apply for delayed deliveries of the supplier's own supplies.
- Should the supplier's delivery dates or service dates or alternatively the delivery periods or service periods on behalf of the supplier not be observed, then the purchaser is obliged to set the supplier a reasonable subsequent date for delivery in writing. Should the supplier culpably not deliver or alternatively perform services within this set subsequent delivery period, then the purchaser is entitled to withdraw from the contract.
- Inasmuch as the supplier is responsible for the non-observance of the accepted date, then the purchaser – provided he can substantiate that damages have thus arisen for him – can demand compensation for each complete week of delay of 0.5%, however, no more than a total of 5% of the price of the deliveries or services affected by the delay. This limitation of liability shall not be applicable if the supplier is to be blamed with handling with intent or with gross negligence or is compulsorily liable for damages arising from death or injury to body and health.
- On demand by the supplier, the purchaser is obliged to explain within a commensurate period whether he withdraws from the contract because of the delays in delivery or performance and/or will make claim for compensation instead of the deliveries demanded and/or insists on receiving the deliveries/performance.

IV. Terms of Delivery:

- The supplier is entitled to make partial deliveries on a reasonable scale. Variances in respect of the measurements, the weight, the technical configuration, the manufacture and the extent of the commodities to be supplied are permitted within a tolerance range of 15%.
- The purchaser additionally consents to any deviating modifications which serve technical improvement of the commodity or alternatively that will not bring about any technical deterioration.

V. Passing of Risk/Delivery:

- Dispatch is made on the order of the purchaser at his cost through a haulage contractor of our choice.
- The risk of accidental destruction and/or loss passes to the purchaser with the despatch or upon handing over to the person carrying out the transportation, respectively. Moreover all risk passes to the purchaser once he is in default of acceptance following receipt of notice of readiness for shipment from the supplier.

VI. Terms of Payment:

- The supplier's invoices are due for payment immediately and without any deduction. Payment is considered to have been made as soon as the sum has been made available to the supplier.
- The supplier reserves the right to demand payment in advance should he so desire.
- Should the purchaser fall into arrears, then the supplier can demand interest on arrears in the amount of 8% p.a. over the valid basic interest rate in accordance with § 247 German Civil Code. Any right to assert further claims for damages shall not be affected by this.
- The supplier is not obliged to accept drafts (Bills of Exchange). These will only be accepted in individual cases on account of performance by reason of special agreements. The discount and collection charges for the draft are to be borne by the issuer upon maturity and are payable immediately in cash.
- Regardless of any single instances of specially agreed payment conditions, demands to which the supplier is legally entitled become immediately due when circumstances arise in the person of the purchaser where any holding to the agreed payment conditions can no longer be deemed acceptable. This is the case if there are grounds to suspect a significant deterioration of the financial position of the purchaser, in particular upon suspension of payments, cheque and draft protests or default of payment, if it is apparent from this that the supplier's claim to the consideration is endangered as a result of the purchaser's lack of ability to pay. In such cases the supplier is furthermore entitled to demand contemporaneous payment with delivery or the surrender of additional securities. Above and beyond this the supplier is entitled to determine a reasonable term within which the purchaser, at the option of the supplier, is to simultaneously execute consideration or provide security in exchange for performance. The supplier may withdraw from the contract upon futile expiry of the said term.
- Within the scope of the warranty for defects the purchaser may only withhold payment after making a justifiable notice of defects to an extent that is in due proportion to the incurred defect. Any lien on goods on the part of the purchaser is otherwise excluded. The purchaser only has the right to offset claims with uncontested or legally enforceable claims.

VII. Reservation of Title:

- The commodities supplied (goods subject to reservation) remain the property of the supplier until all claims on the part of the supplier against the purchaser arising from the business relationship have been met. The purchaser is not permitted to pledge or transfer ownership by way of security for the duration of the reservation of title. In the event of any pledge, seizure or other disposition or intervention by third parties, the purchaser shall immediately notify the supplier of the same.
- The purchaser is entitled to dispose of the goods subject to reservation in the normal course of business provided he receives the agreed remuneration or a prohibition of assignment is not agreed upon. The purchaser herewith preventatively assigns to the supplier the claim arising from the sale. However, he remains duly authorised to the collection of the preventatively assigned claim, as long as such authorisation is not revoked. The authorisation can then be revoked when the purchaser culpably does not or no longer fulfil his contractual obligations. If a direct debit authorisation is revoked, the supplier is permitted to give notice of the occurred assignment. The purchaser must then immediately make available all the documents necessary for the notification of assignment and the collection.
- A sale in the ordinary course of business is not constituted if the goods subject to reservation are pledged or transferred by the purchaser by way of security to a third party, or made the object of factoring and/or sale-lease-back procedures, in violation of sub clause 2.
- In the event of goods subject to reservation being processed or treated, this shall be effected for and on behalf of the supplier as the manufacturer within the sense of §§ 950 et seq. German Civil Code. In this case the supplier is lawfully entitled to [joint] ownership of the articles emerging from the processing or treatment of the goods subject to reservation in the proportion of the goods subject to reservation to the value of the new article at the time of the said processing or treatment. The supplier is likewise entitled to a proportional co-ownership in the new article whenever goods belonging to third parties are processed together with the goods subject to reservation. If the purchaser sells the article newly manufactured by him to another party,

he herewith preventatively assigns the claim due to him arising from that sale to the amount of the value of the goods subject to reservation.

- The purchaser shall immediately notify the supplier if the goods subject to reservation are damaged or otherwise impaired. Any claims against third parties arising from the damage or impairment in favour of the purchaser are herewith preventatively assigned to the supplier.
- Insofar as the value of all security interests to which the supplier is entitled exceeds the amount of all claims covered by security by more than 20% the supplier shall if requested by the purchaser, release a corresponding portion of the security interests.
- Should the purchaser neglect any of his duties, in particular in the case of default of payment, the supplier is entitled to cancel the contract and to take back the goods subject to reservation. The purchaser is obliged to surrender the same. The taking back of the goods subject to reservation, or the enforcement of the reservation of title alone does not require the withdrawal on the part of the supplier and is not to be deemed as an implied declaration of cancellation of the contract unless the supplier explicitly declares that these acts are to be understood as a cancellation.

VIII. Warranty:

- The recipient is obliged to examine the commodities delivered immediately regarding their completeness, outer discernable damages and following normal business procedures carry out feasible checks in addition to making written report of any possible damages without delay.
- No warranty claims shall exist in the event of only immaterial deviation from the agreed condition and only insignificant impairment of the serviceability.
- Furthermore no warranty claims shall exist in the case of fair wear and tear, or by damage arising subsequent to the passing of risk as a result of incorrect or negligent handling, excessive treatment, unsuitable operating materials or that occur as a result of particular external influences that are not presupposed according to the contract.
- In the event of a substantiated notice of defects, i.e. upon the occurrence of quality defects which, or the cause of which, already existed at the time of the passing of risk, the supplier is entitled, at his option, to provide subsequent improvement (removal of defects) or delivery (replacement).
- The warranty for expenses incurred by subsequent improvement is limited to the value of the defective commodities.
- If the supplier supplies a faultless item for the purpose of subsequent performance, the purchaser shall surrender the defective article. This is correspondingly applicable to defective components if these are replaced by faultless components within the scope of subsequent improvement.
- A warranty term of one year shall apply for claims for defects, insofar as the statutory provisions concerning the sale of consumer goods are not applicable (§§ 474 et seq. German Civil Code) in particular with regard to liability upon recourse (§§ 478 et seq. German Civil Code) in the absence of statutory requirements.
- The legal consequences of any violation of the commercial duty to examine goods and the obligation to give notice of defects (according to § 377 German Commercial Code) shall not be affected.
- Clause XI shall otherwise apply to any claims for damages. Claims are excluded that are more extensive or different from those in this sub-clause and clause XI raised on the part of the purchaser against the supplier and his vicarious agents due to a defect of quality.

IX. Returning Commodities:

- Any consignments of faultless goods returned require the prior written agreement of the supplier. For the acceptance of faultless goods the supplier will charge a lump-sum amount for handing to the amount of 30% of the value of the goods. Furthermore, the purchaser will bear all transport costs as well as the costs of packing, repacking and any possible repairs.

X. Compensation/Liability:

- Claims for compensation on the part of the purchaser are excluded, irrelevant of the legal grounds, in particular due to any breach of obligations arising from the contractual obligations and from tortious acts, unless there is compulsory liability in accordance with product liability laws, in cases of liability for intention or grossly negligent conduct, due to fatal or physical injury or health hazard, or due to the infringement of essential contractual obligations.
- Claims for compensation in respect of the violation of essential contractual obligations shall, however, be limited to predictable damages typical for the contract, unless a limitation is excluded for other reasons due to intentional or grossly negligent conduct, due to liability in accordance with product liability laws or due to fatal or physical injury or health hazard.
- In the event of impossibility of performance for which the supplier is responsible, claim for compensation by the purchaser is limited to 10 % of the value of that portion of the delivery which cannot be delivered due to impossibility of performance, as long as the supplier cannot be charged with intent or gross negligence and there is no compulsory liability due to fatal or physical injury or health hazard. The right of the purchaser to withdraw from the contract remains untouched.
- In the event that the purchaser's customer, or his customer, justifiably claims against him for subsequent performance, he shall give the supplier the opportunity to carry out such subsequent performance himself within a reasonable term before procuring other "compensatory" goods. The purchaser shall impose this obligation accordingly to his customer. In the event that the purchaser violates these obligations, the supplier reserves the right to reduce compensation to an amount he would have incurred by carrying out subsequent performance himself. This shall not affect § 444 German Civil Code.
- Compensation for expenses associated with such subsequent performance on the part of the purchaser in respect of his customer are furthermore excluded if the purchaser, contrary to his duty to limit damages, has not made use of his right to refuse this kind of subsequent performance, or both kinds of subsequent performance, because of the disproportion of costs and/or has not limited compensation to a reasonable amount.
- Claims on the part of the purchaser in respect of expenses necessary to effect subsequent performance, in particular transport, travelling, labour and material costs, are excluded if the expenses increase due to the fact that the object of supply has been subsequently transferred to a different place to the one given by the purchaser as recipient address, unless such a transfer corresponds with its designated use. This is applicable to recourse liability accordingly.
- The statutes of limitation binding on these claims are applicable to any claims for damages and compensation in conjunction with the defectiveness of the goods or performance [cf. VIII. 7.]. Claims for compensation caused by liability in accordance with product liability laws, in cases of liability for intentional or grossly negligent conduct, due to fatal or physical injury or health hazard, or due to the infringement of essential contractual obligations are subject to the statutes of limitation.

XI. Data Protection:

- Personal data concerning the purchaser obtained directly or indirectly within the scope of the business relationship or becoming known through third parties will be stored by the supplier in an automatic file and processed in the course of business (reference to BDSG) [Federal Data Protection Act].
- The supplier will observe the relevant data protection regulations (in particular those of the BDSG) during his use of the personal data.
- The purchaser consents to the processing by the supplier of personal data becoming known concerning him indirectly or through third parties.
- The supplier may pass on to the supplier current information concerning the company and the products e.g. in the form of a newsletter concerning changes in the sales programme.

XII. Miscellaneous:

- The supplier reserves all property rights, copyrights and exploitation rights to quotations, drawings and other records (herein referred to as "documents") without limitation. The documents shall only be made accessible to third parties with the prior consent of the supplier and are to be returned immediately on request if the contract is not awarded to the supplier. Sentences 1 and 2 above apply to the purchaser's documents accordingly, although these may be made accessible to such other persons to whom the supplier has legitimately assigned the deliveries.
- The legal relations in conjunction with this contract are governed by German substantive law and exclude the United Nations Convention on Contracts for the International Sale of Goods (CISG).
- The sole legal venue for all disputes arising directly or indirectly from the contractual relationship shall be the registered office of the supplier.
- Should any provision in these Terms and Conditions or any provision in other agreements be or become ineffective, then this shall not affect the effectiveness of all the remaining provisions or agreements.



Herm. Sprenger
Metallwarenfabrik GmbH & Co. KG

Alexanderstraße 10-21 · 58644 Iserlohn · Germany
PO BOX 24 53 · 58634 Iserlohn · Germany

Phone +49 (0) 23 71 95 59-0
Fax +49 (0) 23 71 95 59-939
hundesport@sprenger.de
www.sprenger.de